

Community MULTI-HAZARD Risk Assessment

CRA (Community Risk Assessment) is a participatory process for assessing hazards, vulnerabilities, risks, ability to cope, preparing coping strategy and finally preparing a risk reduction options implementation plan by the local community. The objective of the proposed study is to implement the CRA approach according to CDMP CRA guidelines and facilitate preparation of risk reduction action plan (RRAP) at the community level.

Major steps in CRA

Scoping the Community

Familiarise facilitators with the local risk environment and people's livelihoods through transect walk, wealth ranking/census, resource mapping, focus group discussions, key informants interview etc). Identify stakeholders who will participate in the CRA.

Collection, analysis and validation of secondary information with the community

Identification of Hazards, Vulnerable Sectors, Elements & Locations

Participants divided into separate stakeholder groups to identify the hazards they face in their communities and associated vulnerable sectors/elements/location.

Risk Analysis and Evaluation

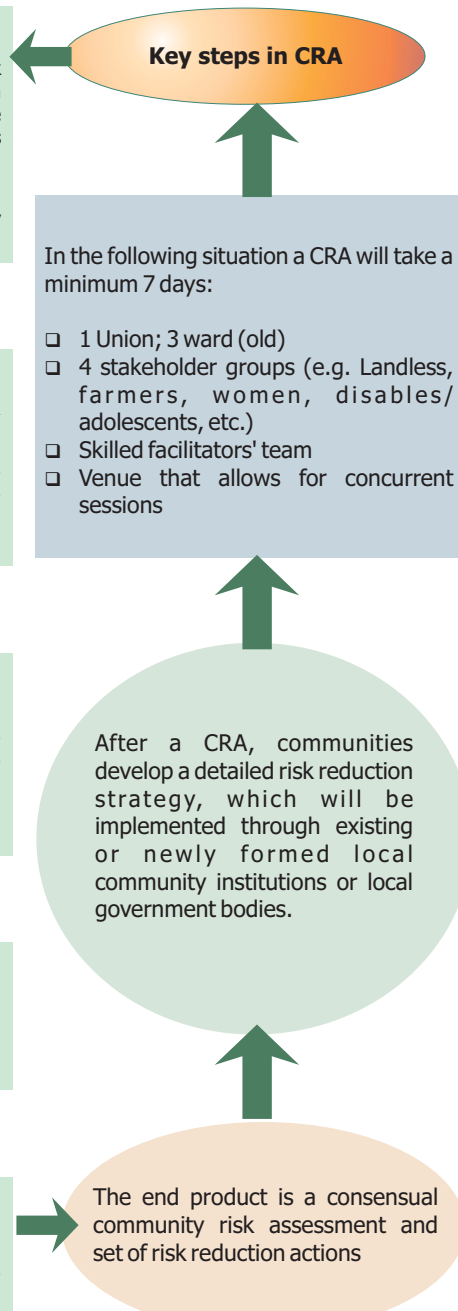
Analysing and evaluating the risk statements to ensure accurate picture of each hazard and their respective risks. This will allow us to prioritise or rank them according to the impact they may have on the various elements which make up a community.

Specific Risk Reduction Options & Action Planning

Determining the most effective and appropriate risk reduction options for the elimination, reduction and/or management of risk.

Consensus on Options

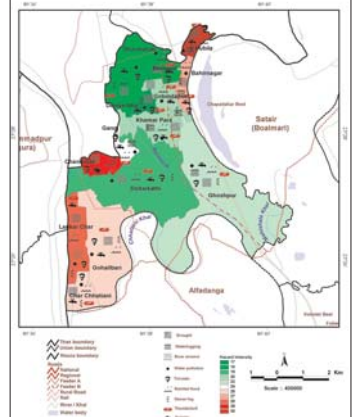
Primary and secondary stakeholders jointly review the compiled output of coping strategy recommended by separate primary stakeholder groups and agree potential options



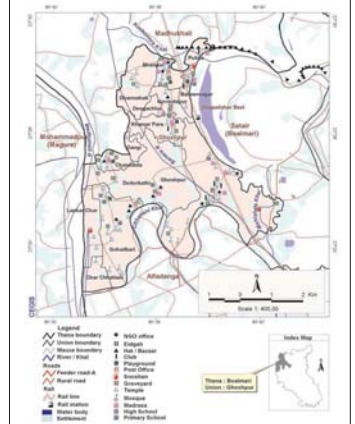
Objectives

- ◆ Validation of Pre-CRA at community level
- ◆ Conduct CRA at community level based on
 - Develop union wise risk map
 - Develop union wise hazard map
 - Develop union wise resources map
- ◆ Facilitate the risk reduction action plan development

MULTI-HAZARD MAP



SOCIAL MAP



Hazard type	Seasonality											
	Boishakh	Jishonthya	Ashar	Shrawoh	Bhadra	Ashwin	Kartik (Agrahayan)	Poush	Margh	Falgun	Chaitra	
Cyclone												
Heavy rainfall/flood												
River erosion												
River/canal siltation												
Water logging												
Drought												
Quam (Tornado)												
Thunderstorm												
Water pollution												
Snake bite (cold spot)												
Thunderbolt												
Heat stroke												
Earthquake												
High												
Medium												
Low												
No occurrence												

SEASONALITY OF HAZARDS

Proposed risk reduction action plan (RRAP) by the community	Solutions			
	F	W	L	E/D
Solutions				
Plantation project	*	*	*	*
Road repairing	*	*	*	*
River/canal re-excavation	*	*	*	*
Emergency medical facility	*	*	*	*
Deep tube well facility	*	*	*	*
Construction of bridge/culver	*	*	*	*
Fish sanctuary	*	*	*	*
Arsenic free water	*	*	*	*
Spray machine	*	*	*	*
Perishing of jute at certain place	*	*	*	*
Early weather forecasting system	*	*	*	*
Skill developed training	*	*	*	*

Major livelihood groups of Ghoshpur Union

