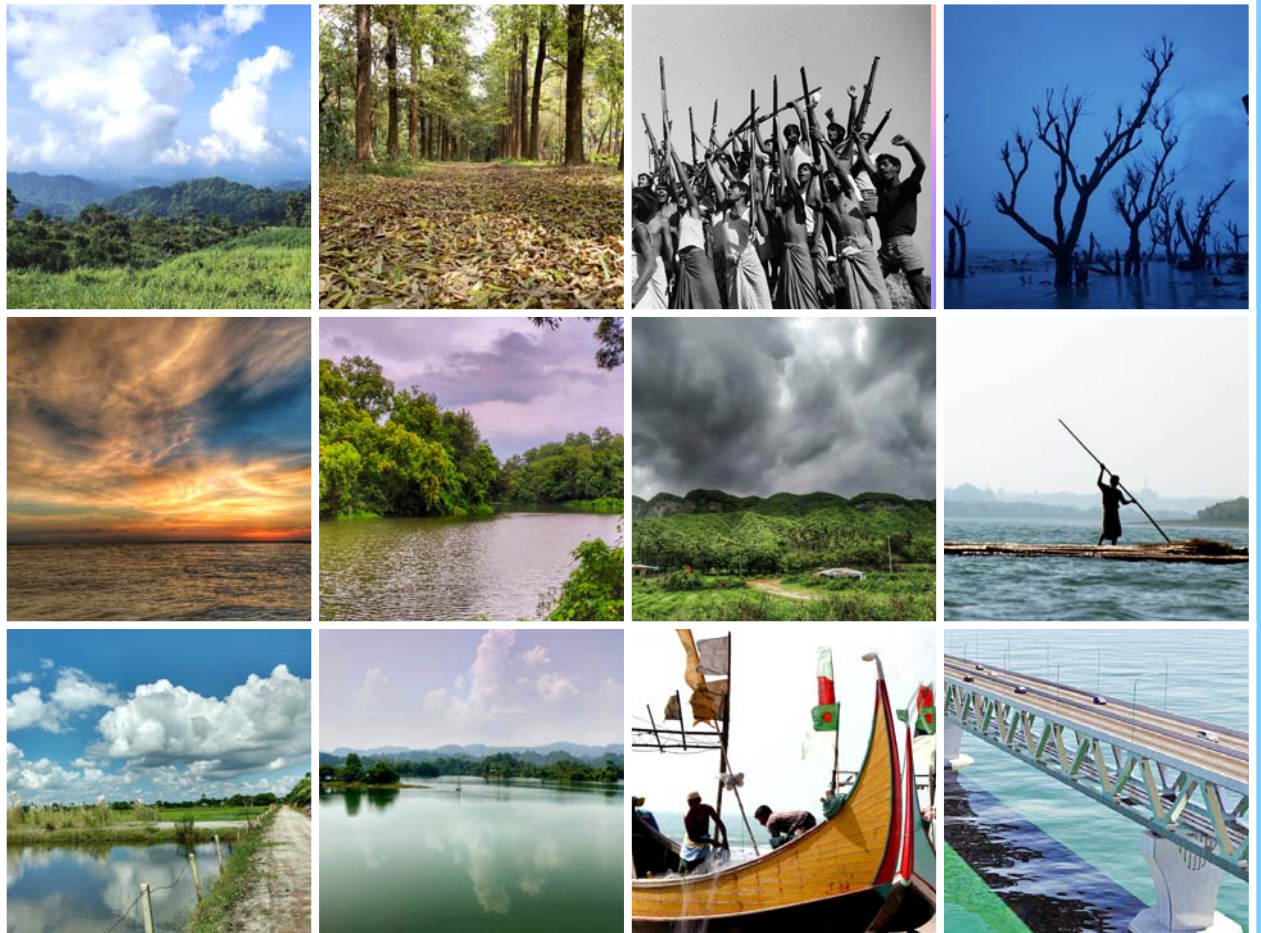




# CALENDAR 2021



## Environment and Infrastructure Management Solution (EIMS) Limited

126/3, Monipuripara, Airport Road, Tejgaon, Dhaka-1215, Bangladesh.

Tel: +880258153382, +8801841625590



[www.eimslbd.com](http://www.eimslbd.com)



[office@eimslbd.com](mailto:office@eimslbd.com)

# VISION

EIMS envisions safe & sustainable infrastructure across the world as a technical think tank.

# MISSION

1. Innovation of new technologies for creating safe & sustainable infrastructure.
2. Adoption of evolving technologies to act as a leading technical think tank.
3. Ensuring quality of service by complying with internationally recognized codes and standards of practices.
4. Developing resilient infrastructure by harmonizing technological solution, societal needs and environmental safeguard through participatory approach.

# VALUES

Our core values are at the heart of our business because they define who we are, how we work, what we believe in, and what we stand for. Our values set out how we act and how we expect to be treated as part of EIMS and provide a sound basis to make decisions.

## Introduction

Environment and Infrastructure Management Solution (EIMS) Limited, a fast-growing multidisciplinary organization, aims to provide solution across a wide spectrum of Natural Resources Management, Environmental/Climate Change & Disaster Management Studies, Structural Engineering, Structural Vulnerability and Integrity Assessments, Retrofitting Design & Construction, Geotechnical Engineering. EIMS started its journey in 2005 and finally was registered as a limited company on 17th October 2011 with the vision “we are for your safety” lead by employees who are determined in providing first-rate services.

From its very inception, the company has won the confidence and goodwill of its clients for more than 10 years with dedicated professionals. During the last decade, EIMS has been working to ensure enabling environmental through EIA/SIA, ESMP, urban planning, disaster risk management through identifying issues, its impacts, possible and realistic mitigation plans in combination of GIS/Remote sensing application on different thematic areas through participatory approach. EIMS also focuses on developing resilient infrastructure by harmonizing state-of-the-art structural engineering, vulnerability assessments, geotechnical engineering and investigations with societal needs and environmental safeguard for both Government and Private sectors. Aimed at creating safe and sustainable infrastructure, EIMS construction division is one of the leading companies in country to perform retrofitting construction works after the “Rana Plaza” for increasing resistance of low-performing structures with safety against vulnerabilities.

EIMS has successfully completed seismic vulnerability assessment of more than 200 buildings, retrofitting works for more than 20 buildings in Dhaka and

Chittagong EPZ along with UN office premises. Due to its professional and reliable performances, EIMS has enlisted itself in Bangladesh Economic Zones Authority (BEZA) and Department of Inspection for Factories and Establishments (DIFE), has a Long-term Agreement with UNICEF and WFP and enlisted as Qualified Assessment Firm (QAF) of Alliance for Bangladesh Workers' Safety. EIMS in its lifetime was involved with one of the biggest residential infrastructure development projects in this country. In renewable energy sector, EIMS supports international renewable energy firms through conducting the feasibility study including topographical survey, hydrological survey and GIS analysis. Also in water and sanitation program, EIMS has been working closely with UNICEF and DPHE in rural piped water system design under the Arsenic Safe Union Project, Provision of life-saving WASH services to the Rohingya refugee, and Supporting and Monitoring of Implementation of WASH Services at Host Community, Cox's Bazar since 2017. Besides that EIMS experts giving consultancy services to several other projects of multinational agencies like Social Management Framework (SMF), Environmental Management Framework (EMF) and vulnerability assessment using intense survey and GIS technologies for World Bank. It has also conducted soil investigation, foundation design and feasibility study of Jhilmil Residential Area Apartments project and Risk Sensitive Land use planning and Vulnerability Assessment of Critical structure for RAJUK, Detail Engineering Assessment (DEA) and retrofitting assessment of 10 PTI Buildings in ten different district for LGED and retrofitting design support for Dhaka City Corporation. With the continued support and good will of our customers, and the dedication of our staff who are key to the success of EIMS, we look forward to embracing the challenges of the future with renewed vigor.

## EIMS's Client Members

The generosity of our Client Member Companies provides the foundation for EIMS's ability to meet the needs of its members and promote a healthy business environment for all businesses. EIMS is grateful for their support.





Nilgiri, Bandarban

Sat	Sun	Mon	Tue	Wed	Thu	Fri
30	31					1
2	3	4	5	6	7	8
9	10	11	12	13	14	15
16	17	18	19	20	21	22
23	24	25	26	27	28	29

If you want to touch the clouds, you will have to go to Nilgiri, Bandarban. At Nilgiri, the cloud will come to you, even you can catch it with your hands. On the above, the blue sky, and the white cloud are playing in the mountain of Nilgiri. It is a place of spectacular beauty. Due to Nilgiri, Bandarban is called Darjeeling of Bangladesh. The green mountain and the white clouds all around will fascinate you.



# 01 JANUARY

2021

Sat	Sun	Mon	Tue	Wed	Thu	Fri
30	31					1
2	3	4	5	6	7	8
9	10	11	12	13	14	15
16	17	18	19	20	21	22
23	24	25	26	27	28	29

## DECEMBER 2020

Sat	Sun	Mon	Tue	Wed	Thu	Fri
			1	2	3	4
5	6	7	8	9	10	11
12	13	14	15	16	17	18
19	20	21	22	23	24	25
26	27	28	29	30	31	

## FEBRUARY 2021

Sat	Sun	Mon	Tue	Wed	Thu	Fri
		1	2	3	4	5
6	7	8	9	10	11	12
13	14	15	16	17	18	19
20	21	22	23	24	25	26
27	28					



**Environment & Infrastructure Management Solution Ltd.**

web: [www.eimsbd.com](http://www.eimsbd.com)



**Bhawal National Park**

Sat	Sun	Mon	Tue	Wed	Thu	Fri
		1	2	3	4	5
6	7	8	9	10	11	12
13	14	15	16	17	18	19
20	21	22	23	24	25	26
27	28					

Bhawal National Park is situated in Gazipur district, beside Dhaka to Mymensingh High way. It's about 40 km away from the Dhaka city. It has very good amenities and recreational facilities and truly a natural treasure. It was also designed to provide recreational opportunities for the people of the country.

21 February - Language Martyrs Day

# 02 FEBRUARY

2021

Sat	Sun	Mon	Tue	Wed	Thu	Fri
		1	2	3	4	5
6	7	8	9	10	11	12
13	14	15	16	17	18	19
20	21	22	23	24	25	26
27	28					

21 February - Language Martyrs Day

## JANUARY 2021

Sat	Sun	Mon	Tue	Wed	Thu	Fri
30	31					1
	2	3	4	5	6	7
	8	9	10	11	12	13
	14	15	16	17	18	19
	20	21	22	23	24	25
	26	27	28	29	30	31

## MARCH 2021

Sat	Sun	Mon	Tue	Wed	Thu	Fri
		1	2	3	4	5
	6	7	8	9	10	11
	12	13	14	15	16	17
	18	19	20	21	22	23
	24	25	26	27	28	29
	30	31				



**Environment & Infrastructure Management Solution Ltd.**

web: [www.eimsbd.com](http://www.eimsbd.com)



## 50 years of Independence

Sat	Sun	Mon	Tue	Wed	Thu	Fri
		1	2	3	4	5
6	7	8	9	10	11	12
13	14	15	16	17	18	19
20	21	22	23	24	25	26
27	28	29	30	31		

17 March - Mujib's Birthday & Children's Day  
26 March - Independence Day

The independence of Bangladesh was achieved in 1971 through 9 months of bloody war and in exchange for the blood of 3 million martyrs. It has been 49 years since independence and many great achievements have already been made. Under the strong leadership of Bangabandhu Sheikh Mujibur Rahman, we got our cherished freedom. Bangabandhu and Bangladesh are inseparable. If Bangabandhu had not been born, Bangladesh would not have been born. The 50th year of independence and the birth centenary of Bangabandhu are undoubtedly a beacon of hope for the Bengali nation. Much of Bangabandhu's dream of building a golden Bengal has come true today. Bangladesh is now on the verge of becoming a strong, developed and prosperous country.

# 03 MARCH

2021

Sat	Sun	Mon	Tue	Wed	Thu	Fri
		1	2	3	4	5
6	7	8	9	10	11	12
13	14	15	16	17	18	19
20	21	22	23	24	25	26
27	28	29	30	31		

17 March - Mujib's Birthday & Children's Day

26 March - Independence Day

## FEBRUARY 2021

Sat	Sun	Mon	Tue	Wed	Thu	Fri
		1	2	3	4	5
6	7	8	9	10	11	12
13	14	15	16	17	18	19
20	21	22	23	24	25	26
27	28					

## APRIL 2021

Sat	Sun	Mon	Tue	Wed	Thu	Fri
					1	2
3	4	5	6	7	8	9
10	11	12	13	14	15	16
17	18	19	20	21	22	23
24	25	26	27	28	29	30



**Environment & Infrastructure Management Solution Ltd.**

web: [www.eimsbd.com](http://www.eimsbd.com)





**Kuakata, Patuakhali**

Sat	Sun	Mon	Tue	Wed	Thu	Fri
					1	2
3	4	5	6	7	8	9
10	11	12	13	14	15	16
17	18	19	20	21	22	23
24	25	26	27	28	29	30

14 April - Bengali New Year's Day

Kuakata offers a full view of the sunrise and sunset from the same white sandy beach in the water of the Bay of Bengal. Locally known as Shagor Kanya (Daughter of Ocean), the long strip of dark, marbled sand stretches for about 18 kilometres (11 mi). The long, wide beach at Kuakata has a typical natural setting. This sandy beach has gentle slopes into the Bay of Bengal. Kuakata is also a sanctuary for migratory winter birds.

On the eastern end of the beach is Gongamati Reserved Forest, an evergreen mangrove forest and snippet of the original Kuakata.

On 13 September 2007 the government had announced a red alert in Kuakata as caution for a possible tsunami.

# 04 APRIL

2021

Sat	Sun	Mon	Tue	Wed	Thu	Fri
					1	2
3	4	5	6	7	8	9
10	11	12	13	14	15	16
17	18	19	20	21	22	23
24	25	26	27	28	29	30

14 April - Bengali New Year's Day

## MARCH 2021

Sat	Sun	Mon	Tue	Wed	Thu	Fri
		1	2	3	4	5
6	7	8	9	10	11	12
13	14	15	16	17	18	19
20	21	22	23	24	25	26
27	28	29	30	31		

## MAY 2021

Sat	Sun	Mon	Tue	Wed	Thu	Fri
1	2	3	4	5	6	7
8	9	10	11	12	13	14
15	16	17	18	19	20	21
22	23	24	25	26	27	28
29	30	31				



**Environment & Infrastructure Management Solution Ltd.**

web: [www.eimsbd.com](http://www.eimsbd.com)



**Padma River**

Sat	Sun	Mon	Tue	Wed	Thu	Fri
1	2	3	4	5	6	7
8	9	10	11	12	13	14
15	16	17	18	19	20	21
22	23	24	25	26	27	28
29	30	31				

1 May - May Day  
 12-14 May - Eid-ul-Fitr  
 19 May - Buddha Purnima

Padma River, main channel of the greater Ganges (Ganga) River in Bangladesh. For some 90 miles (145 km) the Ganges River forms the western boundary between India and Bangladesh before it enters Bangladesh at the northern edge of the Kushtia district as the upper segment of the Padma River. The upper Padma flows southeastward to receive the mighty Jamuna River (the name of the Brahmaputra in Bangladesh) near Rajbari. The combined flow of those two rivers constitutes the lower segment of the Padma, which continues to flow southeastward through central Bangladesh to join the Meghna River near Chandpur and to empty into the Bay of Bengal.

# 05 MAY

2021

Sat	Sun	Mon	Tue	Wed	Thu	Fri
1	2	3	4	5	6	7
8	9	10	11	12	13	14
15	16	17	18	19	20	21
22	23	24	25	26	27	28
29	30	31				

1 May - May Day  
 12-14 May - Eid-ul-Fitr  
 19 May - Buddha Purnima

### APRIL 2021

Sat	Sun	Mon	Tue	Wed	Thu	Fri
					1	2
3	4	5	6	7	8	9
10	11	12	13	14	15	16
17	18	19	20	21	22	23
24	25	26	27	28	29	30

### JUNE 2021

Sat	Sun	Mon	Tue	Wed	Thu	Fri
			1	2	3	4
5	6	7	8	9	10	11
12	13	14	15	16	17	18
19	20	21	22	23	24	25
26	27	28	29	30		



**Environment & Infrastructure Management Solution Ltd.**

web: [www.eimsbd.com](http://www.eimsbd.com)





**Foy's Lake, Chittagong**

Sat	Sun	Mon	Tue	Wed	Thu	Fri
			1	2	3	4
5	6	7	8	9	10	11
12	13	14	15	16	17	18
19	20	21	22	23	24	25
26	27	28	29	30		

Foy's Lake is a man-made lake in Chittagong, Bangladesh. It was created in 1924 by constructing a dam across the stream that came down from the hills in the northern part of Chittagong. The purpose of creating an artificial lake was to provide water to the residents of the railway colony. It was named after Mr. Foy, a Railway engineer, believed to materialize said project.

# 06 JUNE

2021

Sat	Sun	Mon	Tue	Wed	Thu	Fri
			1	2	3	4
5	6	7	8	9	10	11
12	13	14	15	16	17	18
19	20	21	22	23	24	25
26	27	28	29	30		

## MAY 2021

Sat	Sun	Mon	Tue	Wed	Thu	Fri
1	2	3	4	5	6	7
8	9	10	11	12	13	14
15	16	17	18	19	20	21
22	23	24	25	26	27	28
29	30	31				

## JULY 2021

Sat	Sun	Mon	Tue	Wed	Thu	Fri
31						1
2	3	4	5	6	7	8
9	10	11	12	13	14	15
16	17	18	19	20	21	22
23	24	25	26	27	28	29
30						



**Environment & Infrastructure Management Solution Ltd.**

web: [www.eimsbd.com](http://www.eimsbd.com)



**Cox's Bazar, Marine Drive**

Sat	Sun	Mon	Tue	Wed	Thu	Fri
31					1	2
3	4	5	6	7	8	9
10	11	12	13	14	15	16
17	18	19	20	21	22	23
24	25	26	27	28	29	30

20 July - Eid-ul-Adha

Coxsazar Marine Drive is beautiful 2 lane seaside road connecting Coxsazar city with the border town Teknaf. This is the scenic alternative route of the old Arakan road.

Coxsazar beach is one of the longest beaches of the World. Marine Drive portrays the amazing Bay of Bengal shoreline on one side and the Coxsazar hill range on the other side.

# 07 JULY

2021

Sat	Sun	Mon	Tue	Wed	Thu	Fri
31					1	2
3	4	5	6	7	8	9
10	11	12	13	14	15	16
17	18	19	20	21	22	23
24	25	26	27	28	29	30

20 July - Eid-ul-Adha

## JUNE 2021

Sat	Sun	Mon	Tue	Wed	Thu	Fri
			1	2	3	4
5	6	7	8	9	10	11
12	13	14	15	16	17	18
19	20	21	22	23	24	25
26	27	28	29	30		

## AUGUST 2021

Sat	Sun	Mon	Tue	Wed	Thu	Fri
		1	2	3	4	5
6	7	8	9	10	11	12
13	14	15	16	17	18	19
20	21	22	23	24	25	26
27	28	29	30	31		



**Environment & Infrastructure Management Solution Ltd.**

web: [www.eimsbd.com](http://www.eimsbd.com)





**Char Kukri Mukri, Bhola**

Sat	Sun	Mon	Tue	Wed	Thu	Fri
	1	2	3	4	5	6
7	8	9	10	11	12	13
14	15	16	17	18	19	20
21	22	23	24	25	26	27
28	29	30	31			

15 August - National Mourning Day  
18 August - Ashura  
24 August - Janmashtami

A natural beauty rising on heart of Bhola. People know it as 'Dip Konna' too. A good place for traveler who love nature as you can enjoy natural beauty of Mangrove Forest, Wildlife and sea. This island is familiar to everyone cause of its natural beauty. It is an assumption that the island is four to five hundred years old and not so highly modernized.

# 08 AUGUST

2021

Sat	Sun	Mon	Tue	Wed	Thu	Fri
	1	2	3	4	5	6
7	8	9	10	11	12	13
14	15	16	17	18	19	20
21	22	23	24	25	26	27
28	29	30	31			

15 August - National Mourning Day

18 August - Ashura

24 August - Janmashtami

## JULY 2021

Sat	Sun	Mon	Tue	Wed	Thu	Fri
31					1	2
3	4	5	6	7	8	9
10	11	12	13	14	15	16
17	18	19	20	21	22	23
24	25	26	27	28	29	30

## SEPTEMBER 2021

Sat	Sun	Mon	Tue	Wed	Thu	Fri
					1	2
	3	4	5	6	7	8
	9	10	11	12	13	14
	15	16	17	18	19	20
	21	22	23	24	25	26
	27	28	29	30		



**Environment & Infrastructure  
Management Solution Ltd.**

web: [www.eimsbd.com](http://www.eimsbd.com)



**Gopalganj**

Sat	Sun	Mon	Tue	Wed	Thu	Fri
				1	2	3
4	5	6	7	8	9	10
11	12	13	14	15	16	17
18	19	20	21	22	23	24
25	26	27	28	29	30	

Gopalganj District (dhaka division) is bounded by faridpur district on the north, pirojpur and bagerhat districts on the south, madaripur and barisal districts on the east, narail district on the west.

Population Total 1165273; male 592805, female 572468; Muslim 779962, Hindu 371629, Buddhist 13401, Christian 17 and others 264.

Water bodies Main rivers: madhumati, Hunda, Ghagar, old Kumar; Wapda canal and Madaripur Beel Route are notable.

# 09 SEPTEMBER

2021

Sat	Sun	Mon	Tue	Wed	Thu	Fri
				1	2	3
4	5	6	7	8	9	10
11	12	13	14	15	16	17
18	19	20	21	22	23	24
25	26	27	28	29	30	

## AUGUST 2021

Sat	Sun	Mon	Tue	Wed	Thu	Fri
	1	2	3	4	5	6
7	8	9	10	11	12	13
14	15	16	17	18	19	20
21	22	23	24	25	26	27
28	29	30	31			

## OCTOBER 2021

Sat	Sun	Mon	Tue	Wed	Thu	Fri
				1	2	3
4	5	6	7	8	9	10
11	12	13	14	15	16	17
18	19	20	21	22	23	24
25	26	27	28	29	30	



**Environment & Infrastructure Management Solution Ltd.**

web: [www.eimsbd.com](http://www.eimsbd.com)





**Kaptai Lake**

Sat	Sun	Mon	Tue	Wed	Thu	Fri
30	31					1
2	3	4	5	6	7	8
9	10	11	12	13	14	15
16	17	18	19	20	21	22
23	24	25	26	27	28	29

8 October - Durga Puja  
18 October - Eid-e-Miladunnabi

Kaptai Lake is the largest lake in Bangladesh. It is located in the Kaptai Upazila under Rangamati District of Chittagong Division. The lake was created as a result of building the Kaptai Dam on the Karnaphuli River, as part of the Karnaphuli Hydro-electric project. The Kaptai Lake's average depth is 100 feet (30 m) and maximum depth is 490 feet (150 m).

# 10 OCTOBER

2021

Sat	Sun	Mon	Tue	Wed	Thu	Fri
30	31					1
2	3	4	5	6	7	8
9	10	11	12	13	14	15
16	17	18	19	20	21	22
23	24	25	26	27	28	29

8 October - Durga Puja  
18 October - Eid-e-Miladunnabi

## SEPTEMBER 2021

Sat	Sun	Mon	Tue	Wed	Thu	Fri
	1	2	3	4	5	6
7	8	9	10	11	12	13
14	15	16	17	18	19	20
21	22	23	24	25	26	27
28	29	30	31			

## NOVEMBER 2021

Sat	Sun	Mon	Tue	Wed	Thu	Fri
	1	2	3	4	5	
6	7	8	9	10	11	12
13	14	15	16	17	18	19
20	21	22	23	24	25	26
27	28	29	30			



**Environment & Infrastructure  
Management Solution Ltd.**

web: [www.eimsbd.com](http://www.eimsbd.com)



Cox's Bazar

Sat	Sun	Mon	Tue	Wed	Thu	Fri
		1	2	3	4	5
6	7	8	9	10	11	12
13	14	15	16	17	18	19
20	21	22	23	24	25	26
27	28	29	30			

Founded in 1869, Cox's Bazar is named after Captain Hiram Cox, superintendent of the British East India Company, which was stationed in Palongkee (the town's former name). This is an anomaly in the subcontinent, where most colonial place names have been changed, and it is probably due to the positive effect of Captain Cox's rehabilitation work with the Arakanese refugees.

# 11 NOVEMBER

2021

Sat	Sun	Mon	Tue	Wed	Thu	Fri
		1	2	3	4	5
6	7	8	9	10	11	12
13	14	15	16	17	18	19
20	21	22	23	24	25	26
27	28	29	30			

## OCTOBER 2021

Sat	Sun	Mon	Tue	Wed	Thu	Fri
30	31					1
	2	3	4	5	6	7
	8	9	10	11	12	13
	14	15	16	17	18	19
	20	21	22	23	24	25
	26	27	28	29		

## DECEMBER 2021

Sat	Sun	Mon	Tue	Wed	Thu	Fri
				1	2	3
	4	5	6	7	8	9
	10	11	12	13	14	15
	16	17	18	19	20	21
	22	23	24	25	26	27
	28	29	30	31		



**Environment & Infrastructure  
Management Solution Ltd.**

web: [www.eimsbd.com](http://www.eimsbd.com)



**Padma Bridge**

Sat	Sun	Mon	Tue	Wed	Thu	Fri
				1	2	3
4	5	6	7	8	9	10
11	12	13	14	15	16	17
18	19	20	21	22	23	24
25	26	27	28	29	30	31

16 December - Victory Day  
25 December - Christmas Day

The Padma Bridge Project has witnessed an overall 73 percent progress. The way the works of the project continue, the construction work of the bridge will be completed by 2020. Additional 5-6 months will be required to complete the remaining works,



# 12 DECEMBER

2021

Sat	Sun	Mon	Tue	Wed	Thu	Fri
				1	2	3
4	5	6	7	8	9	10
11	12	13	14	15	16	17
18	19	20	21	22	23	24
25	26	27	28	29	30	31

16 December - Victory Day  
 25 December - Christmas Day

## DECEMBER 2021

Sat	Sun	Mon	Tue	Wed	Thu	Fri
				1	2	3
4	5	6	7	8	9	10
11	12	13	14	15	16	17
18	19	20	21	22	23	24
25	26	27	28	29	30	31

## FEBRUARY 2022

Sat	Sun	Mon	Tue	Wed	Thu	Fri
			1	2	3	4
5	6	7	8	9	10	11
12	13	14	15	16	17	18
19	20	21	22	23	24	25
26	27	28				



**Environment & Infrastructure  
 Management Solution Ltd.**

web: [www.eimsbd.com](http://www.eimsbd.com)



**Sajek Vallley, Rangamati**

Sat	Sun	Mon	Tue	Wed	Thu	Fri
1	2	3	4	5	6	7
8	9	10	11	12	13	14
15	16	17	18	19	20	21
22	23	24	25	26	27	28
29	30	31				

Sajek valley: Sajek is a union at Baghaichari Upazila in Rangamati districts. Basically it is name of a river which separates Bangladesh from India. The river flows into the Karnafuli River in the Chittagong Hill Tracts. Sajek Valley is situated in the North angle of Rangamati, near the Mizoram border boundary area. The valley is 1,800 ft high form sea level.

# 01 JANUARY

2022

Sat	Sun	Mon	Tue	Wed	Thu	Fri
1	2	3	4	5	6	7
8	9	10	11	12	13	14
15	16	17	18	19	20	21
22	23	24	25	26	27	28
29	30	31				

## DECEMBER 2021

Sat	Sun	Mon	Tue	Wed	Thu	Fri
				1	2	3
4	5	6	7	8	9	10
11	12	13	14	15	16	17
18	19	20	21	22	23	24
25	26	27	28	29	30	31

## FEBRUARY 2022

Sat	Sun	Mon	Tue	Wed	Thu	Fri
			1	2	3	4
5	6	7	8	9	10	11
12	13	14	15	16	17	18
19	20	21	22	23	24	25
26	27	28				



**Environment & Infrastructure Management Solution Ltd.**

web: [www.eimsbd.com](http://www.eimsbd.com)